

For further information about
WITec TrueMatch please contact us:
by phone: **+49 (0) 731 140700**
by email: **info@witec.de**

WITec TrueMatch

WITec Microscopes



apyron
automated Raman-AFM

alpha300 access

alpha300 Raman-AFM

alpha300 Raman-AFM-SNOM



WITec Headquarters
WITec GmbH
Lise-Meitner-Str. 6
D-89081 Ulm . Germany
Phone +49 (0) 731 140700
Fax +49 (0) 731 14070200
info@witec.de
www.witec.de

WITec North America
WITec Instruments Corp.
130G Market Place Blvd.
Knoxville . TN 37922 . USA
Phone 865 984 4445
Fax 865 984 4441
info@witec-instruments.com
www.witec-instruments.com

WITec South East Asia
WITec Pte. Ltd.
25 International Business Park
#03-59A German Centre
Singapore 609916
Phone +65 9026 5667
shawn.lee@witec.biz

WITec China
WITec Beijing Representative Office
Unit 507, Landmark Tower 1
8 North Dongsanhuan Road
Beijing, PRC., 100004
Phone +86 (0) 10 6590 0577
Info.China@witec-instruments.com
www.witec.de/cn

WITec Japan
WITec K.K.
Mita 2-3227, Chome, Tama-ku,
Kawasaki-shi, Kanagawa-ken 214-0034
Japan
Phone +81 44 19 7773
keiichi.nakamoto@witec-instruments.biz
www.witec.de/jp

WITec TrueMatch

Easy Access, Quick Search, Positive Identification

TrueMatch is a powerful and innovative software component for accessing and developing Raman spectral databases. With this technology, existing databases containing representative Raman spectra of common materials or substrates can be searched and used to identify the contents of a sample. It also allows users to create their own catalog of spectra pertinent to their research.

TrueMatch is fully integrated with the WITec Suite FIVE software environment and is a perfect complement to WITec's data evaluation and post-processing components.

Multi-spectral searches enable the user to identify several spectra simultaneously, using databases to return hit rates that describe the probability of a match for each individual spectrum.

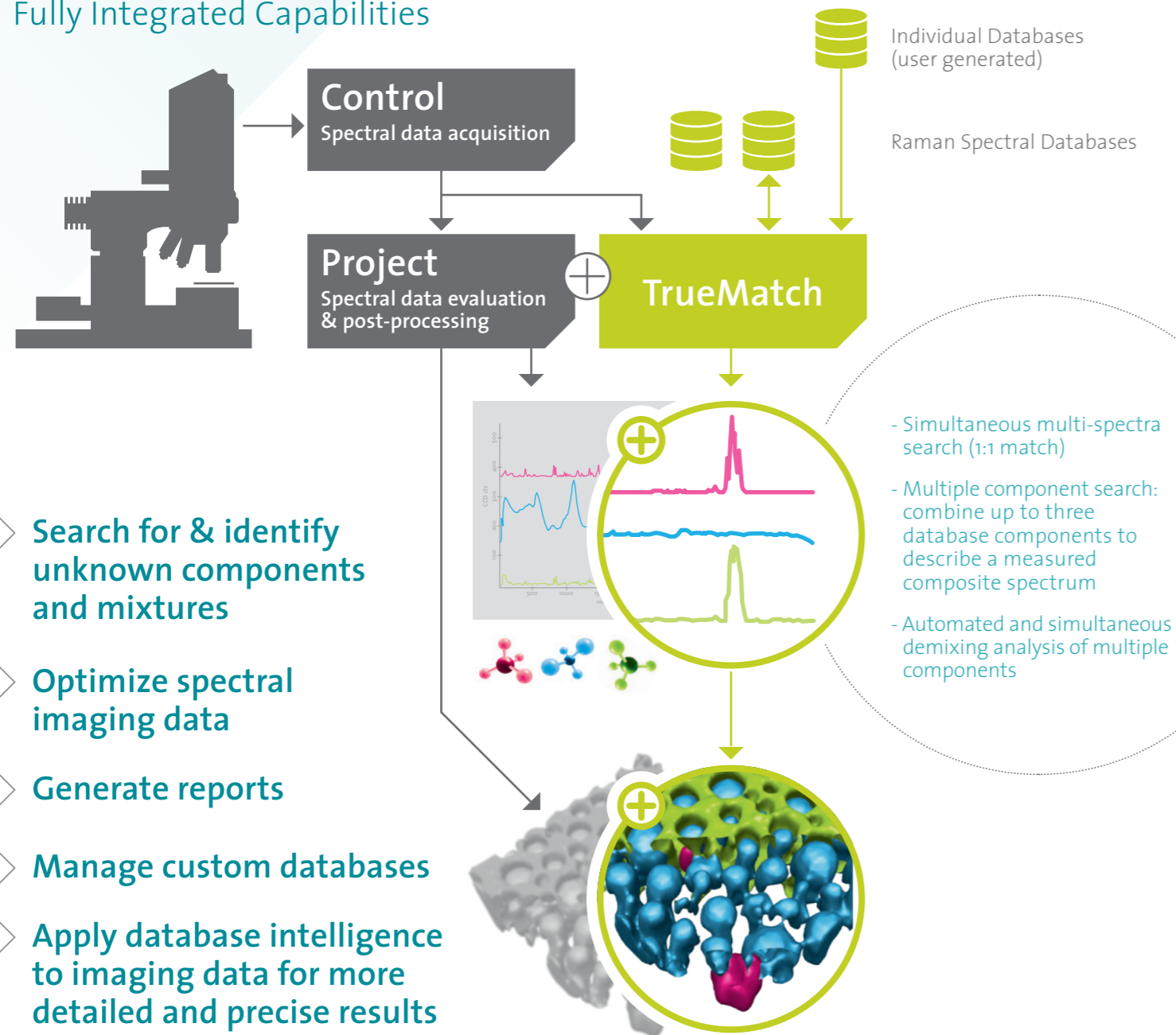
Demix search uses databases to describe acquired spectra in terms of pure substances, which can then be physically located in an image.

Seeing the distribution of pure chemical components matched to sample features gives the researcher a precise visualization verified by established databases.

Generated reports can be stored for further use in subsequent measurements, which turns meaningful results into a valuable resource.

In addition to the proprietary WITec Raman database capability included with TrueMatch, compatible versions of ST Japan's wide range of databases are available. Extensive libraries of Raman spectra can be referenced while creating your own, all from within WITec's fully-integrated software and hardware environment.

Fully Integrated Capabilities



- > Search for & identify unknown components and mixtures
- > Optimize spectral imaging data
- > Generate reports
- > Manage custom databases
- > Apply database intelligence to imaging data for more detailed and precise results

Database Search

